



# ÜRÜN KATALOĐU

## PRODUCT CATALOGUE



SERİN® CİVATA

# SERİN CİVATA

TR

Kuruluşundan itibaren ürettiği vida ve civataların kalitesi ve sürekliliği konusunda hassasiyet göstermiş, dolayısıyla ürün grubunda uzmanlaşmış ve kaliteyi üst seviyelere taşımıştır. Ürünlerin istenilen özelliklere uygunluğu ve alınan siparişlerdeki teslim koşullarına uymak vazgeçilmez ilkelere birisi olmuştur. Serin Civata'nın üretim konusu olan standart ürünlerde stoklu çalışması nedeni ile talep edilen ürünler zamanında teslim edilmektedir. Özel ürünlerde ise belirlenen termin koşullarına sadık kalmak ve üretim ve stok planlaması en verimli şekilde yapılmaktadır. Firmamız, ürün yelpazesinde bulunan 4, 5, 6, 8, 10 ve 12 mm çaplarındaki vida ve civatalarda 8 mm ile 300 mm boya kadar yaptığı üretimlerle özel ve standart ürünlerde kendi sektöründe önemli bir üretim gücü ve hizmet potansiyeline sahiptir.

Serin Civata, güncel teknolojiye sahip üretim alanında, ISO 9001-2015 kalite yönetim sistemi koşullarına uygun çalışarak, makine parkurunu genişleterek ve sürekli proses denetimi yaparak, ayda 400 tonluk üretim kapasitesi ve ürettiği ürünler itibarı ile önemli ihtiyaçlara cevap verebilir konumdadır.

Serin Civata kurulduğu tarihten bu yana dürüstlüğü ve çalışkanlığı kendisine ilke edinmiştir. Önümüzdeki süre içinde kaliteyi teknoloji ile birlikte kullanarak daha iyi üretim ve hizmet verecektir. Amacımız, ülkemize sürekli istihdam sağlayarak, üretim yaparak müşterilerimizi beklentilerinin ötesinde en kaliteli ürünlerle buluşturmak ve hizmet vermektir.

EN

Serin Civata shows sensitivity for the quality and invariability of screws and bolts which are produced, so our company has specialized in our product group and increased the level of quality. Relevance of products to customers needs and to suit delivery conditions has been one of irrevocable basic of our company. By the reason of Serin Civata works with stocking in standart products, the products which are requested are delivered on time. Planning of production and stocking are done most efficiently to be faithful to expiration conditions of special products. Our company has significant production power and service potential in the fastener sector with his range of special and standart products which has diameters of 4, 5, 6, 8, 10 and 12 mm length of between 8 mm and 300 mm.

Serin Civata is in situation of being able to satisfy necessary requirements by working in accordance with conditions of ISO 9001-2015 quality management system, expanding machine range, making process inspection continuously and 400 tones of production capacity in the production area which has current technology.

Serin Civata has obtained the honesty and diligence as principles since establishment. Our firm will give better service and have better production by using quality and technology together in forthcoming times. Our main purpose is to bring our customers together with top quality products which are beyond their expectations by providing permanent employment and prouction to our country.



## ÇELİK ÜRÜNLER

Steel Products (8.8, 10.9)

SB Inbus Cıvata DIN 912 / **Hexagon Socket Head Cap Screw**

HB Inbus Cıvata DIN 7991 / **Hexagon Socket Countersunk Head Cap Screw**

BB Inbus Cıvata DIN 7380 / **Hexagon Socket Button Head Screws**

Altıköşe Cıvata DIN 931-933 / **Hexagon Head Bolt**

Altıköşe Flanşlı Cıvata DIN 6921 / **Hexagon Head Flange Bolt**

Yuvarlak Başlı Dibi Dört Köşe Cıvata DIN 603 / **Mushroom Head Square Neck Bolt**

Altıköşe Flanşlı SL Kafalı Vida / **Hexagon Head Flange Bolt with SL Head**

## DEMİR ÜRÜNLER

Ferrous Products (5.8)

Altıköşe Trifon Vida DIN 571 / **Hexagon Head Wood Screw**

Altıköşe Cıvata DIN 933 / **Hexagon Head Bolt**

Altıköşe Flanşlı Cıvata DIN 6921 / **Hexagon Head Flange Bolt**

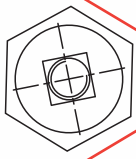
Yuvarlak Başlı Dibi Dört Köşe Cıvata DIN 603 / **Mushroom Head Square Neck Bolt**

Altıköşe Flanşlı SL Kafalı Vida / **Hexagon Head Flange Bolt with SL Head**

Yb Kasa Cıvata / **Flat Head Carriage Bolt**



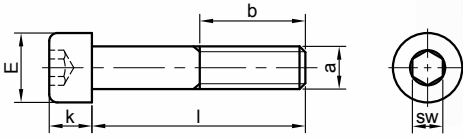
# Çelik Ürünler



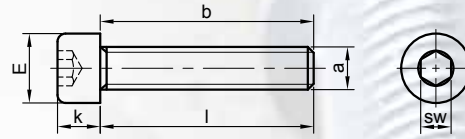
# SB INBUS CİVATALAR DIN 912

**Dayanım Sınıfı (8.8)**

## Hexagon Socket Head Cap Screw Class (8.8)



**SB INBUS CİVATA DIN 912 YARIM DİŞ**  
Hexagon Socket Head Cap Screw Half Thread



**SB INBUS CİVATA DIN 912 TAM DİŞ**  
Hexagon Socket Head Cap Screw Full Thread

l	8	10	12	16	20	25	30	35	40	45	50	55	60	70	75	80	90	100	110	120	130	140	150	160	170	180	190	200	210		
M4 P 0.7	k	4	4	4	4	4	4	4	4	4	4	4	4																		
	d						3,85	3,85	3,85	3,85	3,85	3,85	3,85																		
	E	7	7	7	7	7	7	7	7	7	7	7	7																		
	sw	3	3	3	3	3	3	3	3	3	3	3	3																		
M5 P 0.8	b	8	10	12	16	20	25																								
	b1						20	20	20	20	20	20	20																		
	k	5	5	5	5	5	5	5	5	5	5	5	5	5	5	5	5	5	5	5	5	5	5	5	5	5	5	5	5	5	
	d						4,85	4,85	4,85	4,85	4,85	4,85	4,85	4,85	4,85	4,85	4,85	4,85	4,85	4,85	4,85	4,85	4,85	4,85	4,85	4,85	4,85	4,85	4,85	4,85	
M6 P 1.0	E	8,5	8,5	8,5	8,5	8,5	8,5	8,5	8,5	8,5	8,5	8,5	8,5	8,5	8,5	8,5	8,5	8,5	8,5	8,5	8,5	8,5	8,5	8,5	8,5	8,5	8,5	8,5	8,5	8,5	
	sw	4	4	4	4	4	4	4	4	4	4	4	4	4	4	4	4	4	4	4	4	4	4	4	4	4	4	4	4	4	4
	b	8	10	12	16	20	25																								
	b1						22	22	22	22	22	22	22	22	22	22	22	22	22	22	22	22	22	22	22	22	22	22	22	22	22
M8 P 1.25	k	6	6	6	6	6	6	6	6	6	6	6	6	6	6	6	6	6	6	6	6	6	6	6	6	6	6	6	6	6	
	d								5,85	5,85	5,85	5,85	5,85	5,85	5,85	5,85	5,85	5,85	5,85	5,85	5,85	5,85	5,85	5,85	5,85	5,85	5,85	5,85	5,85	5,85	
	E	10	10	10	10	10	10	10	10	10	10	10	10	10	10	10	10	10	10	10	10	10	10	10	10	10	10	10	10	10	10
	sw	5	5	5	5	5	5	5	5	5	5	5	5	5	5	5	5	5	5	5	5	5	5	5	5	5	5	5	5	5	5
M10 P 1.5	b	8	10	12	16	20	25	30	35																						
	b1								24	24	24	24	24	24	24	24	24	24	24	24	24	24	24	24	24	24	24	24	24	24	
	k		8	8	8	8	8	8	8	8	8	8	8	8	8	8	8	8	8	8	8	8	8	8	8	8	8	8	8	8	8
	d									7,85	7,85	7,85	7,85	7,85	7,85	7,85	7,85	7,85	7,85	7,85	7,85	7,85	7,85	7,85	7,85	7,85	7,85	7,85	7,85	7,85	
M12 P 1.75	E		13	13	13	13	13	13	13	13	13	13	13	13	13	13	13	13	13	13	13	13	13	13	13	13	13	13	13	13	13
	sw		6	6	6	6	6	6	6	6	6	6	6	6	6	6	6	6	6	6	6	6	6	6	6	6	6	6	6	6	6
	b		10	12	16	20	25	30	35	40																					
	b1									28	28	28	28	28	28	28	28	28	28	28	28	28	28	28	28	28	28	28	28	28	
M10 P 1.5	k				10	10	10	10	10	10	10	10	10	10	10	10	10	10	10	10	10	10	10	10	10	10	10	10	10	10	10
	d									9,85	9,85	9,85	9,85	9,85	9,85	9,85	9,85	9,85	9,85	9,85	9,85	9,85	9,85	9,85	9,85	9,85	9,85	9,85	9,85	9,85	
	E				16	16	16	16	16	16	16	16	16	16	16	16	16	16	16	16	16	16	16	16	16	16	16	16	16	16	16
	sw				8	8	8	8	8	8	8	8	8	8	8	8	8	8	8	8	8	8	8	8	8	8	8	8	8	8	8
M12 P 1.75	b				16	20	25	30	35	40	45																				
	b1											32	32	32	32	32	32	32	32	32	32	32	32	32	32	32	32	32	32	32	
	k				12	12	12	12	12	12	12	12	12	12	12	12	12	12	12	12	12	12	12	12	12	12	12	12	12	12	12
	d											11,85	11,85	11,85	11,85	11,85	11,85	11,85	11,85	11,85	11,85	11,85	11,85	11,85	11,85	11,85	11,85	11,85	11,85	11,85	
M12 P 1.75	E				18	18	18	18	18	18	18	18	18	18	18	18	18	18	18	18	18	18	18	18	18	18	18	18	18	18	
	sw				10	10	10	10	10	10	10	10	10	10	10	10	10	10	10	10	10	10	10	10	10	10	10	10	10	10	10
	b				20	25	30	35	40	45	50																				
	b1											36	36	36	36	36	36	36	36	36	36	36	36	36	36	36	36	36	36	36	

b=Tam Diş Boyu / Full Thread Length  
b1=Yarım Diş Boyu / Half Thread Length

d=Şaft Çapı / Diameter of Shaft  
k=Kafa Yüksekliği / Height of Head

sw=Anahtar Ağız / Wide of Head  
E=Kafa Çapı / Head Diameter

l=Toplam Boy / Total Length  
P=Diş adımı/Pitch



## HB INBUS CİVATALAR DIN 7991

Dayanım  
Sınıfı (10.9)

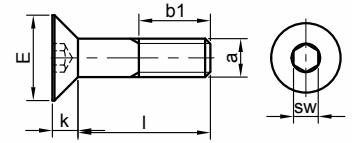
### Hexagon Socket Countersunk Head Cap Screw Class (10.9)

I		10	12	14	16	20	25	30	35	40	45	50	60	70	80	90	100
M5 P 0.8	k	3,3	3,3	3,3	3,3	3,3	3,3	3,3	3,3	3,3	3,3	3,3					
	E max.	10,0	10,0	10,0	10,0	10,0	10,0	10,0	10,0	10,0	10,0	10,0					
	sw	3	3	3	3	3	3	3	3	3	3	3					
	t	2,3	2,3	2,3	2,3	2,3	2,3	2,3	2,3	2,3	2,3	2,3					
	b	6,7	8,7	10,7	12,7	19,7	21,7	26,7	31,7	36,7	41,7	46,7					
M6 P 1.0	k	3,8	3,8	3,8	3,8	3,8	3,8	3,8	3,8	3,8	3,8	3,8					
	E max.	12,0	12,0	12,0	12,0	12,0	12,0	12,0	12,0	12,0	12,0	12,0					
	sw	4	4	4	4	4	4	4	4	4	4	4					
	t	2,5	2,5	2,5	2,5	2,5	2,5	2,5	2,5	2,5	2,5	2,5					
	b	7,2	8,2	10,2	12,2	19,2	21,2	26,2	31,2	32,2	41,2	46,2					
M8 P 1.25	k				4,8	4,8	4,8	4,8	4,8	4,8	4,8	4,8					
	E max.				16	16	16	16	16	16	16	16					
	sw				5	5	5	5	5	5	5	5					
	t				3,5	3,5	3,5	3,5	3,5	3,5	3,5	3,5					
	b				11,0	15,0	20,0	25,0	30,0	35,0	40,0	45,0	55,0				
M10 P 1.5	k				6	6	6	6	6	6	6	6	6	6	6	6	6
	E max.				19,80	19,80	19,80	19,80	19,80	19,80	19,80	19,80	19,80	19,80	19,80	19,80	19,80
	sw				6	6	6	6	6	6	6	6	6	6	6	6	6
	t				4,4	4,4	4,4	4,4	4,4	4,4	4,4	4,4	4,4	4,4	4,4	4,4	4,4
	b				10	14	19	24	29	34	39	44	54	64	74	84	94
M12 P 1.75	k						7	7	7	7	7	7	7	7	7	7	7
	E max.						24	24	24	24	24	24	24	24	24	24	24
	sw						8	8	8	8	8	8	8	8	8	8	8
	t						4,6	4,6	4,6	4,6	4,6	4,6	4,6	4,6	4,6	4,6	4,6
	b						23	28	33	38	43	53	63	73	83	93	93

b=Tam Diş Boyu / Full Thread Length  
b1=Yarım Diş Boyu / Half Thread Length

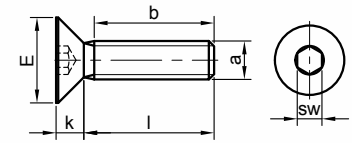
t=Zimba derinliği/  
k=Kafa Yüksekliği / Height of Head

sw-Anahtar Ağzı / I=Toplam Boy / Total Length  
d=Şaft Çapı / Diameter E=Kafa Çapı / Head Diameter



### HB INBUS CİVATA DIN 7991 YARIM DİŞ

Hexagon Socket Countersunk  
Head Cap Screw Half Thread



### HB INBUS CİVATA DIN 7991 TAM DİŞ

Hexagon Socket Countersunk  
Head Cap Screw Full Thread



## BB INBUS CİVATALAR DIN 7380

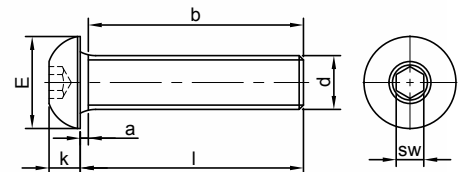
Dayanım  
Sınıfı (8.8)

### Hexagon Socket Button Head Screws Class (8.8)

I		10	12	14	16	20	25	30	35	40	45	50
M5 P 0.8	k min.	2,75	2,75	2,75	2,75	2,75	2,75	2,75				
	E	9,3	9,3	9,3	9,3	9,3	9,3	9,3				
	sw	3	3	3	3	3	3	3				
	t min.	1,56	1,56	1,56	1,56	1,56	1,56	1,56				
	b	10,0	12,0	14,0	16,0	20,0	25,0	30,0				
M6 P 1.0	k min.	3,3	3,3	3,3	3,3	3,3	3,3	3,3				
	E	10,3	10,3	10,3	10,3	10,3	10,3	10,3				
	sw	4	4	4	4	4	4	4				
	t min.	2,08	2,08	2,08	2,08	2,08	2,08	2,08				
	b	10	12	14	16	20	25	30				
M8 P 1.25	k min.				4,4	4,4	4,4	4,4	4,4	4,4	4,4	4,4
	E				13,7	13,7	13,7	13,7	13,7	13,7	13,7	13,7
	sw				5	5	5	5	5	5	5	5
	t min.				2,60	2,60	2,60	2,60	2,60	2,60	2,60	2,60
	b				16,0	20,0	25,0	30,0	35,0	40,0	45,0	50,0
M10 P 1.5	k				5,5	5,5	5,5	5,5	5,5	5,5	5,5	5,5
	E				17,3	17,3	17,3	17,3	17,3	17,3	17,3	17,3
	sw				6	6	6	6	6	6	6	6
	t min.				3,12	3,12	3,12	3,12	3,12	3,12	3,12	3,12
	b				16,0	20,0	25,0	30,0	35,0	40,0	45,0	50,0
M12 P 1.75	k						6,6	6,6	6,6	6,6	6,6	6,6
	E						20,80	20,80	20,80	20,80	20,80	20,80
	sw						8	8	8	8	8	8
	t min.						4,16	4,16	4,16	4,16	4,16	4,16
	b						20,0	25,0	30,0	35,0	40,0	45,0

b=Tam Diş Boyu / Full Thread Length  
sw-Anahtar Ağzı / Wide of Head  
E=Kafa Çapı / Head Diameter

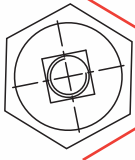
t=Zimba derinliği/Punch depth  
k=Kafa Yüksekliği / Height of Head  
I=Toplam Boy / Total Length



### BB INBUS CİVATA

Hexagon Socket Button  
Head Screw

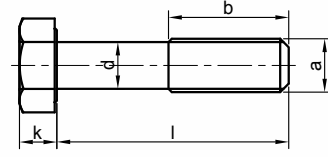




# ALTIKÖŞE CİVATA DIN 931-933

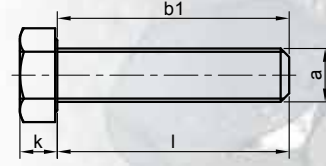
Dayanım  
Sınıfı (8.8)

## Hexagon Head Bolt Class (8.8)



**ALTIKÖŞE CİVATA DIN 931**

Hexagon Head Bolt DIN 931



**ALTIKÖŞE CİVATA DIN 933**

Hexagon Head Bolt DIN 933

l	10	12	16	20	25	30	35	40	45	50	60	70	80	90	100	110	120	125	130	140	150	160	170	180	190	200	
M4 P 0.7	k	2,8	2,8	2,8	2,8	2,8	2,8	2,8	2,8	2,8																	
	d																										
	sw	7	7	7	7	7	7	7	7	7																	
	b1																										
M5 P 0.8	b	10	12	16	20	25	30	35	40	45	50																
	k	3,5	3,5	3,5	3,5	3,5	3,5	3,5	3,5	3,5	3,5	3,5	3,5	3,5	3,5												
	d					4,85	4,85	4,85	4,85	4,85	4,85	4,85	4,85	4,85	4,85	4,85	4,85	4,85	4,85	4,85	4,85	4,85	4,85	4,85	4,85	4,85	4,85
	sw	8	8	8	8	8	8	8	8	8	8	8	8	8	8	8	8	8	8	8	8	8	8	8	8	8	8
M6 P 1.0	b1				16	16	16	16	16	16	16	16	16	16	16	16											
	k	4,0	4,0	4,0	4,0	4,0	4,0	4,0	4,0	4,0	4,0	4,0	4,0	4,0	4,0	4,0	4,0										
	d								5,85	5,85	5,85	5,85	5,85	5,85	5,85	5,85	5,85	5,85	5,85	5,85	5,85	5,85	5,85	5,85	5,85	5,85	5,85
	sw	10	10	10	10	10	10	10	10	10	10	10	10	10	10	10	10	10	10	10	10	10	10	10	10	10	10
M8 P 1.25	b	10	12	16	20	25	30	35	40	45	50	60	70	80	90	100											
	k	5,3	5,3	5,3	5,3	5,3	5,3	5,3	5,3	5,3	5,3	5,3	5,3	5,3	5,3	5,3	5,3	5,3	5,3	5,3	5,3	5,3	5,3	5,3	5,3	5,3	5,3
	d								7,80	7,80	7,80	7,80	7,80	7,80	7,80	7,80	7,80	7,80	7,80	7,80	7,80	7,80	7,80	7,80	7,80	7,80	7,80
	sw	13	13	13	13	13	13	13	13	13	13	13	13	13	13	13	13	13	13	13	13	13	13	13	13	13	13
M10 P 1.50	b1						22	22	22	22	22	22	22	22	22	22	22	22	22	28	28	28	28	28	28	28	28
	k			6,4	6,4	6,4	6,4	6,4	6,4	6,4	6,4	6,4	6,4	6,4	6,4	6,4	6,4	6,4	6,4	6,4	6,4	6,4	6,4	6,4	6,4	6,4	6,4
	d										9,80	9,80	9,80	9,80	9,80	9,80	9,80	9,80	9,80	9,80	9,80	9,80	9,80	9,80	9,80	9,80	
	sw			17	17	17	17	17	17	17	17	17	17	17	17	17	17	17	17	17	17	17	17	17	17	17	
M12 P 1.75	b			16	20	25	30	35	40	45	50	60	70	80	90	100	110	120	125	130	140	150					
	k			7,5	7,5	7,5	7,5	7,5	7,5	7,5	7,5	7,5	7,5	7,5	7,5	7,5	7,5	7,5	7,5	7,5	7,5	7,5	7,5	7,5	7,5	7,5	
	d											11,80	11,80	11,80	11,80	11,80	11,80	11,80	11,80	11,80	11,80	11,80	11,80	11,80	11,80	11,80	
	sw			19	19	19	19	19	19	19	19	19	19	19	19	19	19	19	19	19	19	19	19	19	19	19	19
M12 P 1.75	b1											30	30	30	30	30	30	30	36	36	36	36	36	36	36	36	
	b			20	25	30	35	40	45	50	60	70	80	90	100	110	120	125	130	140	150						

b=Tam Diş Boyu / Full Thread Length  
b1=Yarım Diş Boyu / Half Thread

P=Diş adımı / Pitch  
k=Kafa Yüksekliği / Height of Head

sw=Anahtar Ağzı / Wide of Head  
d=Şaft Çapı / Diameter of Shaft

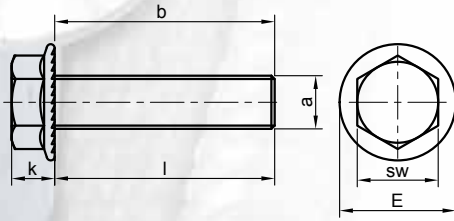
l=Toplam Boy / Total Length



# ALTİKÖŞE FLANŞLI CİVATA DIN 6921

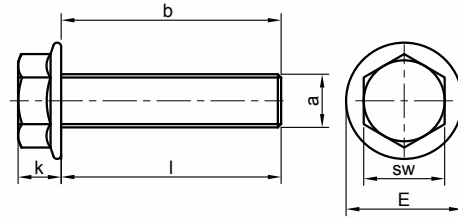
Dayanım Sınıfı (8.8)

## Hexagon Head Flange Bolt Class (8.8)



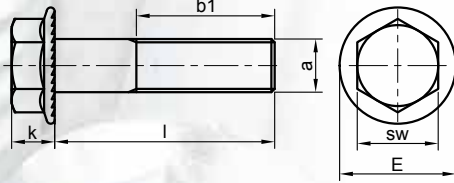
**ALTİKÖŞE FLANŞLI CİVATA DIN 6921  
TIRTIKLI TAM DİŞ**

Hexagon Head Flange Bolt Full Thread  
with Serration under Head



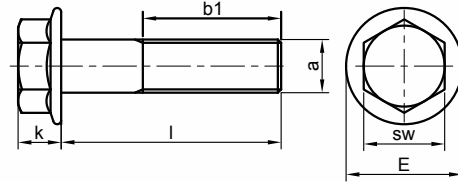
**ALTİKÖŞE FLANŞLI CİVATA DIN 6921  
TIRTIKSIZ TAM DİŞ**

Hexagon Head Flange Bolt Full Thread



**ALTİKÖŞE FLANŞLI CİVATA DIN 6921  
TIRTIKLI YARIM DİŞ**

Hexagon Head Flange Bolt Half Thread  
with Serration under Head



**ALTİKÖŞE FLANŞLI CİVATA DIN 6921  
TIRTIKSIZ YARIM DİŞ**

Hexagon Head Flange Bolt Half Thread

l		10	12	16	20	25	30	35	40	45	50	55	60	70	75	80	90	100
M5 P 0.8	k	5,4	5,4	5,4	5,4	5,4	5,4	5,4	5,4	5,4	5,4							
	E	11,8	11,8	11,8	11,8	11,8	11,8	11,8	11,8	11,8	11,8							
	sw	8	8	8	8	8	8	8	8	8	8							
	b	10	12	16	20													
M6 P 1.0	b1					16	16	16	16	16	16							
	k	6	6	6	6	6	6	6	6	6	6	6	6					
	E	14,2	14,2	14,2	14,2	14,2	14,2	14,2	14,2	14,2	14,2	14,2	14,2	14,2				
	sw	10	10	10	10	10	10	10	10	10	10	10	10	10				
M8 P 1.25	b	10	12	16	20	25												
	b1					18	18	18	18	18	18	18	18					
	k			8,0	8,0	8,0	8,0	8,0	8,0	8,0	8,0	8,0	8,0	8,0	8,0	8,0	8,0	8,0
	E			18	18	18	18	18	18	18	18	18	18	18	18	18	18	18
M10 P 1.50	sw			13	13	13	13	13	13	13	13	13	13	13	13	13	13	13
	b			16	20	25	30	35	40									
	b1									22	22	22	22	22	22	22	22	22
	k			9	9	9	9	9	9	9	9	9	9	9	9	9	9	9
M12 P 1.75	E			22,0	22,0	22,0	22,0	22,0	22,0	22,0	22,0	22,0	22,0	22,0	22,0	22,0	22,0	22,0
	sw			15	15	15	15	15	15	15	15	15	15	15	15	15	15	15
	b			16	20	25	30	35	40	45	50							
	b1											32	32	32	32	32	32	32
M12 P 1.75	k			11	11	11	11	11	11	11	11							
	E			26,0	26,0	26,0	26,0	26,0	26,0	26,0	26,0							
	sw			16	16	16	16	16	16	16	16							
	b					25	30	35	40	45	50							
M12 P 1.75	b1																	

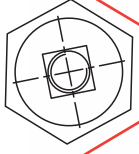
b=Tam Diş Boyu / Full Thread Length  
b1=Yarım Diş Boyu / Half Thread Length  
l=Toplam Boy / Total Length

E=Kafa Çapı / Head Diameter  
k=Kafa Yüksekliği / Height of Head

sw=Anahtar Ağız / Wide of Head  
P=Diş adımı / Pitch



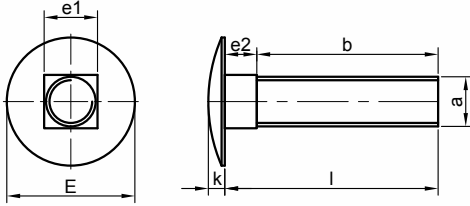




## YUVARLAK BAŞLI DİBİ DÖRT KÖŞE CİVATALAR DIN-603

### Mushroom Head Square Neck Bolt Class (8.8)

Dayanım  
Sınıfı (8.8)



### YUVARLAK BAŞLI DİBİ DÖRT KÖŞE CİVATA

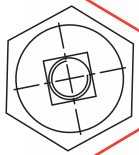
Mushroom Head Square Neck Bolt

l		15	20	25	30	35	40	45	50	60	70	80	90	100
M5 P 0.8	k	3	3	3	3	3	3	3	3	3				
	e1	5	5	5	5	5	5	5	5	5				
	e2	3,5	3,5	3,5	3,5	3,5	3,5	3,5	3,5	3,5				
	E	13	13	13	13	13	13	13	13	13				
	b	11	16	21	26	31	36	41	46	56				
M6 P 1.0	k	3,5	3,5	3,5	3,5	3,5	3,5	3,5	3,5	3,5	3,5	3,5	3,5	3,5
	e1	6	6	6	6	6	6	6	6	6	6	6	6	6
	e2	4	4	4	4	4	4	4	4	4	4	4	4	4
	E	16	16	16	16	16	16	16	16	16	16	16	16	16
	b	10	15	20	25	30	35	40	45	55	65	75	85	95
M8 P 1.25	k	4,5	4,5	4,5	4,5	4,5	4,5	4,5	4,5	4,5	4,5	4,5	4,5	4,5
	e1	8	8	8	8	8	8	8	8	8	8	8	8	8
	e2	5	5	5	5	5	5	5	5	5	5	5	5	5
	E	20	20	20	20	20	20	20	20	20	20	20	20	20
	b	9	14	19	24	29	34	39	44	54	64	74	84	94
M10 P 1.5	k		5	5	5	5	5	5	5	5	5	5	5	5
	e1		10	10	10	10	10	10	10	10	10	10	10	10
	e2		6	6	6	6	6	6	6	6	6	6	6	6
	E		24	24	24	24	24	24	24	24	24	24	24	24
	b		13	18	23	28	33	38	43	53	63	73	83	93
M12 P 1.75	k						6,5	6,5	6,5	6,5	6,5	6,5	6,5	6,5
	e1						12	12	12	12	12	12	12	12
	e2						8	8	8	8	8	8	8	8
	E						30	30	30	30	30	30	30	30
	b						31	36	41	51	61	71	81	91

b=Diş Boyu / Thread Length  
l=Toplam Boy / Total Length

k=Kafa Yüksekliği / Height of Head  
e1=Kare Ölçüsü / Square Diameter  
a=Diş Üstü Çapı / Diameter of Threaded Part

e2=Kare Yüksekliği / Square Height  
E=Kafa Çapı / Head Diameter



## ALTİKÖŞE FLANŞLI SL KAFALI VİDA

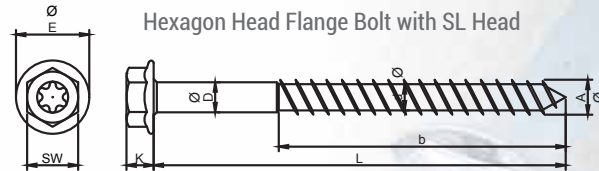
### Hexagon Head Flange Bolt with SL Head Class (8.8)

Dayanım  
Sınıfı (8.8)

l		80	100	120	140	160
7	k	6,8	6,8	6,8	6,8	6,8
	a	7,2	7,2	7,2	7,2	7,2
	E	18	18	18	18	18
	sw	13	13	13	13	13
	torx	T40	T40	T40	T40	T40
	b					
	b1	70	70	70	100	100

### ALTİKÖŞE FLANŞLI SL KAFALI VİDA

Hexagon Head Flange Bolt with SL Head



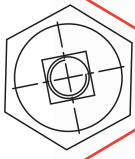
b=Tam Diş Boyu / Full Thread Length  
b1=Yarım Diş Boyu / Half Thread  
l=Toplam Boy / Total Length

a=Diş Üstü Çapı / Diameter of Threaded Part  
k=Kafa Yüksekliği / Height of Head

sw=Anahtar Ağzı / Wide of Head  
E=Kafa Çapı / Head Diameter



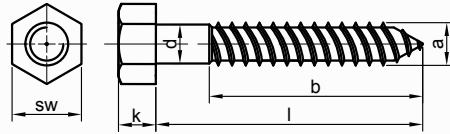
# Demir Ürünler



# ALTIKÖŞE TRİFON VİDALAR DIN 571

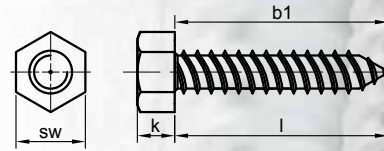
Hexagon Head Wood Screw Class (5.8)

Dayanım  
Sınıfı (5.8)



**ALTIKÖŞE TRİFON  
YARIM DİŞ**

Hexagon Head Wood Screw Half Thread



**ALTIKÖŞE TAM DİŞ TRİFON**

Hexagon Head Wood Screw Full Thread

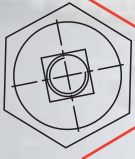
l		30	40	50	60	70	80	90	100	110	120	130	140	150	160	170	180	190	200	210	220	
6	k	4,2	4,2	4,2	4,2	4,2	4,2	4,2	4,2	4,2	4,2											
	d	4,7	5,5	5,5	5,5	5,5	5,5	5,5	5,5	5,5	5,5											
	a	6	6	6	6	6	6	6	6	6	6											
	sw	10	10	10	10	10	10	10	10	10	10											
	b	30																				
8	b1		30	40	40	52	50	60	60	60	60											
	k	5,1	5,1	5,1	5,1	5,1	5,1	5,1	5,5	5,5	5,5	5,5	5,5	5,5	5,5	5,5	5,5	5,5	5,5	5,5	5,5	5,5
	d	7,3	7,3	7,3	7,3	7,3	7,3	7,3	7,3	7,3	7,3	7,3	7,3	7,3	7,3	7,3	7,3	7,3	7,3	7,3	7,3	7,3
	a	8	8	8	8	8	8	8	8	8	8	8	8	8	8	8	8	8	8	8	8	8
	sw	13	13	13	13	13	13	13	13	13	13	13	13	13	13	13	13	13	13	13	13	13
10	b	30	40	50	60	70	80	90	100	110	120											
	b1		40	50	60	60	60	60	70	80	80	90	90	100	100		100		100		100	
	k		6,6	6,6	6,6	6,6	6,6	6,6	6,6	6,6	6,6	6,6	6,6	6,6	6,6	6,6	6,6	6,6	6,6	6,6	6,6	6,6
	d			9,4	9,4	9,4	9,4	9,4	9,4	9,4	9,4	9,4	9,4	9,4	9,4	9,4	9,4	9,4	9,4	9,4	9,4	9,4
	a		10	10	10	10	10	10	10	10	10	10	10	10	10	10	10	10	10	10	10	10
10	sw		17	17	17	17	17	17	17	17	17	17	17	17	17	17	17	17	17	17	17	17
	b		40	50	60	70	80	90	100	110	120											
	b1			40	40	50	60	70	70	70	90	90	100	100	120	120	120	120		120		

b=Tam Diş Boyu / Full Thread Length  
b1=Yarım Diş Boyu / Half Thread Length

a=Diş Üstü Çapı / Diameter of Threaded Part  
k=Kafa Yüksekliği / Height of Head

sw-Anahtar Ağzı / Wide of Head  
d=Şaft Çapı / Diameter of Shaft

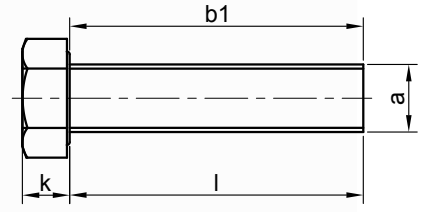
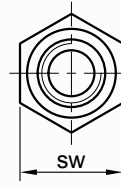
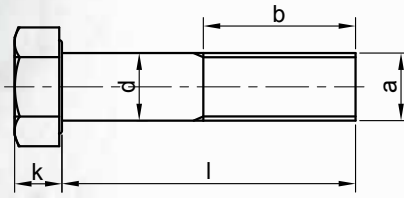
l=Toplam Boy / Total Length



# ALTIKÖŞE DEMİR CİVATALAR DIN 933

Dayanım Sınıfı (5.8)

## Hexagon Head Bolt Class (5.8)



### ALTIKÖŞE DEMİR CİVATA

Hexagon Head Bolt Half Thread

### ALTIKÖŞE DEMİR CİVATA

Hexagon Head Bolt Full Thread

l		10	12	15	20	25	30	35	40	45	50	60	70	80	90	100	110	120	125	130	140	150	160	170	180	190	200	
M4 P 0.7	k	2,8	2,8	2,8	2,8	2,8	2,8	2,8	2,8	2,8	2,8																	
	sw	7	7	7	7	7	7	7	7	7	7																	
	d																											
	b1																											
	b	10	12	15	20	25	30	35	40	45	50																	
M5 P 0.8	k	3,5	3,5	3,5	3,5	3,5	3,5	3,5	3,5	3,5	3,5	3,5	3,5	3,5	3,5													
	d												4,40	4,40	4,40	4,40												
	sw	8	8	8	8	8	8	8	8	8	8	8	8	8	8	8												
	b1												50	60	60	65												
	b	10	12	15	20	25	30	35	40	45	50	60	70	80	90	100												
M6 P 1.0	k	4,1	4,1	4,1	4,1	4,1	4,1	4,1	4,1	4,1	4,1	4,1	4,1	4,1	4,1	4,1	4,35	4,35	4,35	4,80	4,80	4,80	4,80	4,80	4,80	4,80	4,80	
	d																5,25	5,25	5,85	5,85	5,85	5,85	5,85	5,85	5,85	5,85	5,85	
	sw	10	10	10	10	10	10	10	10	10	10	10	10	10	10	10	10	10	10	10	10	10	10	10	10	10	10	10
	b1																55	55	46	42	50	43	32	48				
	b	10	12	15	20	25	30	35	40	45	50	60	70	80	90	100	110	120	125	130	140	150	160	180				
M8 P 1.25	k	5,1	5,1	5,1	5,1	5,1	5,1	5,1	5,1	5,1	5,1	5,1	5,1	5,1	5,1	5,1	5,1	5,1	5,1	5,1	5,1	5,1	5,1	5,1	5,1	5,1	5,1	
	d																		7,06	7,06	7,06	7,06	7,06	7,06	7,06	7,06	7,06	
	sw	13	13	13	13	13	13	13	13	13	13	13	13	13	13	13	13	13	13	13	13	13	13	13	13	13	13	
	b1																		55	55	55	55	55	55	55	55	55	
	b	10	12	15	20	25	30	35	40	45	50	60	70	80	90	100	110	120	125	130	140	150	160	170	180	190	200	
M10 P 1.5	k		6,1	6,1	6,1	6,1	6,1	6,1	6,1	6,1	6,1	6,1	6,1	6,1	6,1	6,1	6,1	6,1	6,1	6,1	6,1	6,1	6,1	6,1	6,1	6,1	6,1	
	d																			8,90	8,90	8,90	8,90	8,90	8,90	8,90	8,90	
	sw		17	17	17	17	17	17	17	17	17	17	17	17	17	17	17	17	17	17	17	17	17	17	17	17	17	
	b1																			80	80	80	80	80	80	80	80	
	b		12	15	20	25	30	35	40	45	50	60	70	80	90	100	110	120	130	140	150	160	170	180	190	200	200	
M12 P 1.75	k				7,5	7,5	7,5	7,5	7,5	7,5	7,5	7,5	7,5	7,5	7,5	7,5	7,5	7,5	7,5	7,5	7,5	7,5	7,5	7,5	7,5	7,5	7,5	
	d																			10,73	10,73	10,73	10,73	10,73	10,73	10,73	10,73	
	sw				19	19	19	19	19	19	19	19	19	19	19	19	19	19	19	19	19	19	19	19	19	19	19	
	b1																			80	80	80	80	80	80	80	80	
	b				20	25	30	35	40	45	50	60	70	80	90	100	110	120	130	140	150	160	170	180	190	200	200	

b=Tam Diş Boyu / Full Thread Length

b1=Yarım Diş Boyu / Half Thread Length

a=Diş Üstü Çapı / Diameter of Threaded Part

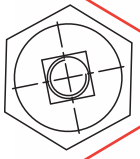
k=Kafa Yüksekliği / Height of Head

sw=Anahtar Ağzı / Wide of Head

d=Saft Çapı / Diameter of Shaft

l=Toplam Boy / Total Length

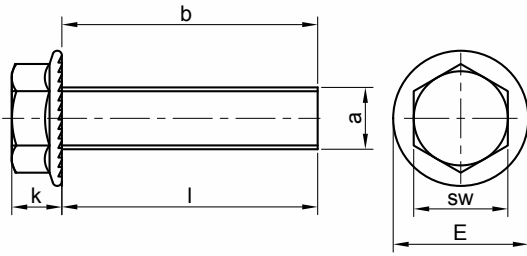




# ALTIKÖŞE FLANŞLI CİVATALAR DIN 6921

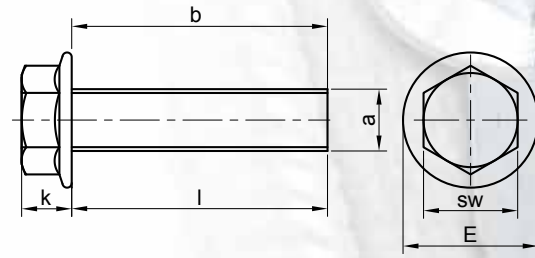
Dayanım  
Sınıfı (5.8)

## Hexagon Head Bolt Class (5.8)



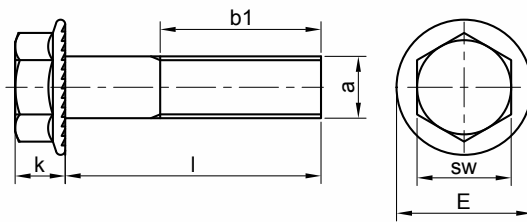
### ALTIKÖŞE FLANŞLI CİVATA - TIRTIKLI TAM DİŞ

Hexagon Head Flange Bolt Full Thread  
with Serration under Head



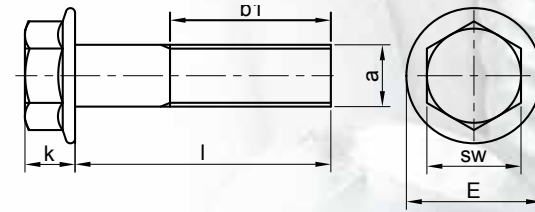
### ALTIKÖŞE FLANŞLI CİVATA TIRTIKSIZ TAM DİŞ

Hexagon Head Flange Bolt Full Thread



### ALTIKÖŞE FLANŞLI CİVATA - TIRTIKLI YARIM DİŞ

Hexagon Head Flange Bolt Half Thread  
with Serration under Head



### ALTIKÖŞE FLANŞLI CİVATA - TIRTIKSIZ YARIM DİŞ

Hexagon Head Flange Bolt Full Thread

l		10	12	16	20	25	30	35	40	45	50	55	60	70	75	80	90	100
M5	k	5,4	5,4	5,4	5,4	5,4												
	E	11,8	11,8	11,8	11,8	11,8												
	sw	8	8	8	8	8												
	b	10	12	16	20	25												
	b1																	
M6	k	6	6	6	6	6	6											
	E	14	14	14	14	14	14											
	sw	10	10	10	10	10	10											
	b	10	12	16	20	25	30											
	b1																	
M8	k			8,0	8,0	8,0	8,0	8,0	8,0									
	E			18	18	18	18	18	18									
	sw			13	13	13	13	13	13									
	b			16	20	25	30	35	40									
	b1																	

b=Tam Diş Boyu / Full Thread Length

b1=Yarım Diş Boyu / Half Thread

l=Toplam Boy / Total Length

E=Kafa Çapı / Head Diameter

k=Kafa Yüksekliği / Height of Head

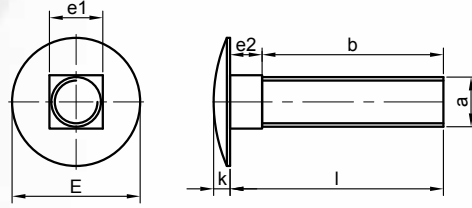
sw-Anahtar Ağız / Wide of Head



# YUVARLAK BAŞLI DİBİ DÖRT KÖŞE CİVATA DIN-603

## Mushroom Head Square Neck Bolt Class (5.8)

Dayanım  
Sınıfı (5.8)



### YUVARLAK BAŞLI DİBİ DÖRT KÖŞE CİVATA

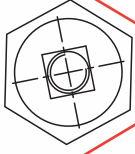
Mushroom Head Square Neck Bolt

I		15	20	25	30	35	40	45	50	60	70	80	90	100
M5 P 0.8	k	3	3	3	3	3	3	3	3	3				
	e1	5	5	5	5	5	5	5	5	5				
	e2	3,5	3,5	3,5	3,5	3,5	3,5	3,5	3,5	3,5				
	E	13	13	13	13	13	13	13	13	13				
	b	11	16	21	26	31	36	41	46	56				
M6 P 1.0	k	3,5	3,5	3,5	3,5	3,5	3,5	3,5	3,5	3,5	3,5	3,5	3,5	3,5
	e1	6	6	6	6	6	6	6	6	6	6	6	6	6
	e2	4	4	4	4	4	4	4	4	4	4	4	4	4
	E	16	16	16	16	16	16	16	16	16	16	16	16	16
	b	10	15	20	25	30	35	40	45	55	65	75	85	95
M8 P 1.25	k	4,5	4,5	4,5	4,5	4,5	4,5	4,5	4,5	4,5	4,5	4,5	4,5	4,5
	e1	8	8	8	8	8	8	8	8	8	8	8	8	8
	e2	5	5	5	5	5	5	5	5	5	5	5	5	5
	E	20	20	20	20	20	20	20	20	20	20	20	20	20
	b	9	14	19	24	29	34	39	44	54	64	74	84	94
M10 P 1.5	k		5	5	5	5	5	5	5	5	5	5	5	5
	e1		10	10	10	10	10	10	10	10	10	10	10	10
	e2		6	6	6	6	6	6	6	6	6	6	6	6
	E		24	24	24	24	24	24	24	24	24	24	24	24
	b		13	18	23	28	33	38	43	53	63	73	83	93
M12 P 1.75	k						6,5	6,5	6,5	6,5	6,5	6,5	6,5	6,5
	e1						12	12	12	12	12	12	12	12
	e2						8	8	8	8	8	8	8	8
	E						30	30	30	30	30	30	30	30
	b						31	36	41	51	61	71	81	91

b=Diş Boyu / Thread Length  
P=Diş adımı/Pitch  
l=Toplam Boy / Total Length

k=Kafa Yüksekliği / Height of Head  
e1=Kare Ölçüsü / Square Diameter

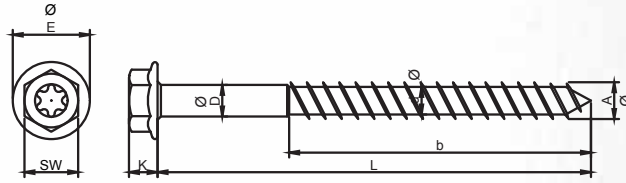
e2=Kare Yüksekliği / Square Height  
E= Kafa Çapı / Head Diameter



## ALTIKÖŞE FLANŞLI SL KAFALI VİDA

Dayanım  
Sınıfı (5.8)

Hexagon Head Flange Bolt with SL Head Class (5.8)



### ALTIKÖŞE FLANŞLI SL KAFALI VİDA

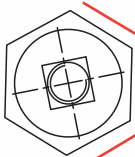
Hexagon Head Flange Bolt with SL Head

I		80	100	120	140	160
7	k	6,8	6,8	6,8	6,8	6,8
	a	7,2	7,2	7,2	7,2	7,2
	E	18	18	18	18	18
	sw	13	13	13	13	13
	torx	T40	T40	T40	T40	T40
	b					
	b1	70	70	70	100	100

b=Tam Diş Boyu / Full Thread Length  
b1=Yarım Diş Boyu / Half Thread  
l=Toplam Boy / Total Length

a=Diş Üstü Çapı / Diameter of Threaded Part  
k=Kafa Yüksekliği / Height of Head

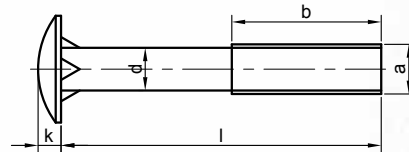
sw-Anahtar Ağzı / Wide of Head  
E=Kafa Çapı / Head Diameter



## YB KASA CİVATALARI

Dayanım  
Sınıfı (5.8)

Flat Head Carriage Bolt Class (5.8)



### YB KASA CİVATASI

Flat Head Carriage Bolt

I		20	25	30	35	40	45	50	60	70	80	90	100	110	120	130	140	150	160	170	180	190	200
1/4	b	15	18	20	22	28	28	28	28	28	28	28	28										
	k	3,3	3,3	3,3	3,3	3,3	3,3	3,3	3,3	3,3	3,3	3,3	3,3										
	d	5,35	5,35	5,35	5,35	5,35	5,35	5,35	5,35	5,35	5,35	5,35	5,35	5,35									
5/16	b			12	18	24	28	32	35	35	35	35	35	45	45	45	45	45	45	45	45	45	45
	k			4	4	4	4	4	4	4	4	4	4	4	4	4	4	4	4	4	4	4	4
	d			6,82	6,82	6,82	6,82	6,82	6,82	6,82	6,82	6,82	6,82	6,82	6,82	6,82	6,82	6,82	6,82	6,82	6,82	6,82	6,82
3/8	b					25		30	30	35	35	40	40	40	50	60	60	60	60	60	60	60	60
	k					4,3		4,3	4,3	4,3	4,3	4,3	4,3	4,3	4,3	4,3	4,3	4,3	4,3	4,3	4,3	4,3	4,3
	d					8,37		8,37	8,37	8,37	8,37	8,37	8,37	8,37	8,37	8,37	8,37	8,37	8,37	8,37	8,37	8,37	8,37

b=Diş Boyu / Thread Length  
l=Toplam Boy / Total Length

k=Kafa Yüksekliği / Height of Head

d=Şaft Çapı / Diameter of Shaft



**Our company manufactures all types of bolts in a variety of sizes from 4mm, 5mm, 6mm, 10mm to 12 mm in diameters and from 8mm to 220mm in lengths.**

- |         |  |          |   |
|---------|--|----------|---|
| DIN 571 | : Hexagon Head Wood Screw                    | DIN 6912 | : Cap Screw Thin Cylindrical Head                   |
| DIN 931 | : Hexagon Head Bolt                          | DIN 6921 | : Hexagon Head Flange Bolt                          |
| DIN 933 | : Hexagon Head Full Threaded                 | DIN 7971 | : Pan Head Tapping Screws with Cross Recess H and Z |
| DIN 912 | : Hexagon Socket Head Cap Screw              | DIN 7981 | : Slotted Pan Head Tapping Screw                    |
| DIN 603 | : Mushroom Head Square Neck Bolt             | DIN 7991 | : Hexagon Socket Countersunk Head Cap Screw         |
| DIN 965 | : Cross Recessed Countersunk Head Screw      | DIN 7997 | : Cross Recessed Countersunk (flat) Head Screw      |
| DIN 967 | : Cross Recessed Pan Head Screws with Collar | DIN 7984 | : Hexagon Socket Thin Head Cap Screw                |
| DIN 84  | : Slotted Cheese Head Screw                  | DIN 7985 | : Phil Cross Recessed Pan Head Screw                |
| DIN 96  | : Slotted Round Head Wood Screw              |          |   |





**Quality Policy**

**Productive**

**Efficient**

**Qualified**

**On Time**

**Risk Based Auditing**

**Continuous Development**



Small Things,

**ÖZEL ÜRÜNLER**  
Special Products



Building & Construction  
Sector

Machine  
Manufacturing  
Industry

Automotive  
Industry



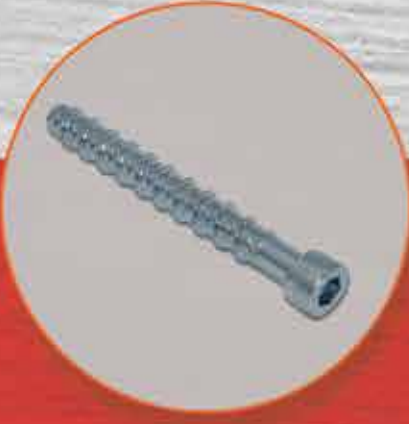


SERIN® CIVATA

[www.serincivata.com.tr](http://www.serincivata.com.tr)

## Clever Solutions

ÖZEL ÜRÜNLER  
Special Products



Furniture  
Sector

White Goods  
Sector

Traffic  
Equipments



**SERİN® CİVATA**

- 🏠 Selimpaşa Mahallesi, Yeldeğirmeni Caddesi  
No: 22 Silivri / İSTANBUL - TÜRKİYE
- ☎ +90 212 671 46 54 - 671 46 59 - 671 46 60
- ☎ +90 212 671 42 99
- ✉ civata@serincivata.com.tr
- 🌐 www.serincivata.com.tr